



WinSCP - Accessing your M and U drives from home

You can access your M (personal) and U (group) drives from home using an application called WinSCP. This is available at no cost.

Installation

Download and launch the WinSCP setup from the following website:

<http://winscp.net/download/winscp419setup.exe>

On launching the setup, you should see the following screen:

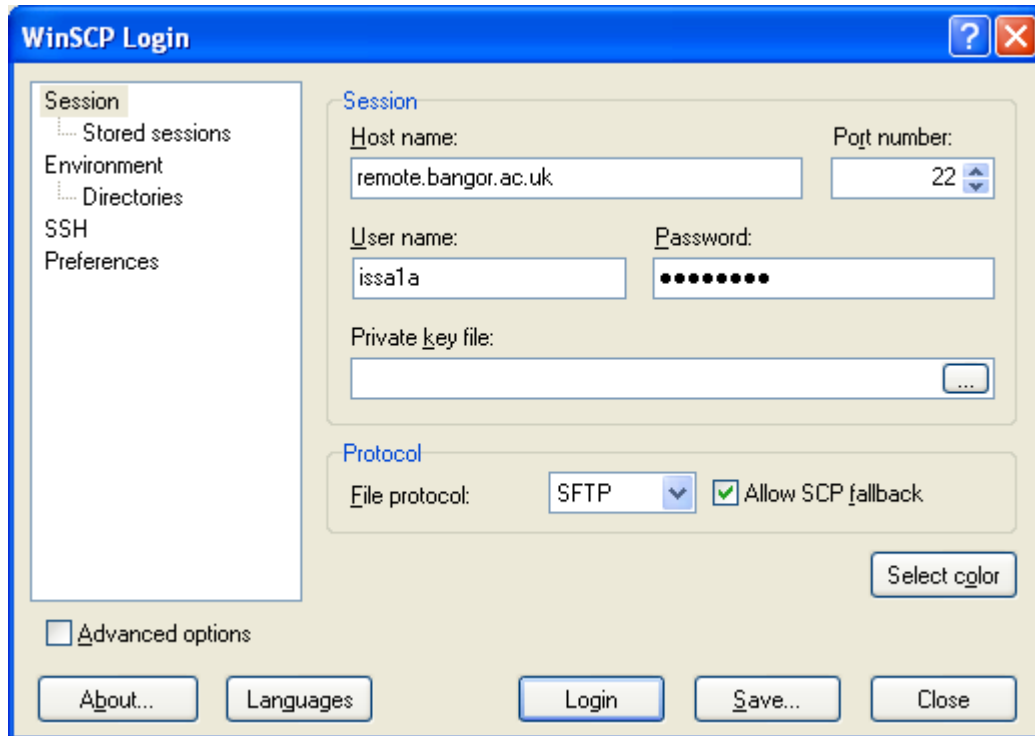


1. Click **Next**.
2. Click **Next** again.
3. Select **Typical Installation** and click **Next**.
4. Select **Explorer-like interface** and click **Next**.
5. Click **Install**.
6. Click **Finish**.

WinSCP should now automatically load, this can also be accessed via the shortcut placed on your desktop.

Accessing your M and U Drives

When WinSCP first opens, you will see the following screen:



Please enter the following details:

Host name: **remote.bangor.ac.uk**

User name: **Your university computing user name.**

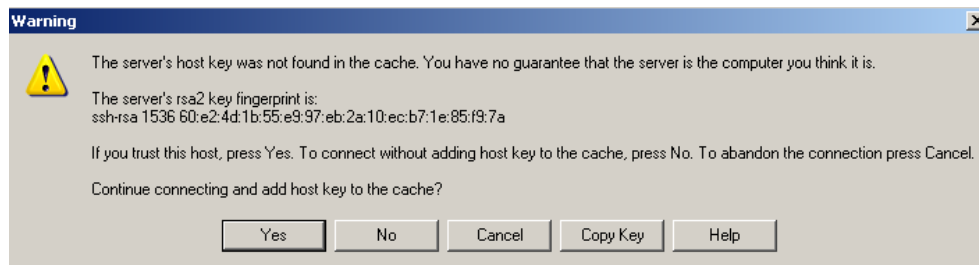
Password: **Your university computing password.**

Then click **Save, and OK**. This will allow you to connect in future without entering these details again.

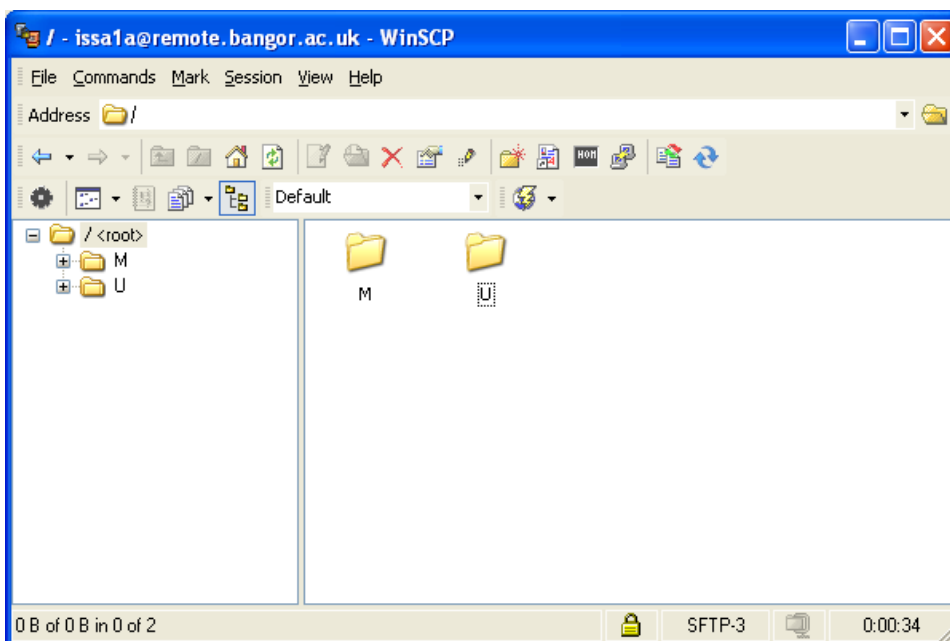
Now **click Login and enter your password when prompted.**

Note:

If at this point you may see a warning message similar to the one below, simply click **Yes**. This is just an added security check and should not appear again.



You will now see a screen similar to below.



The M folder is your M drive

The U folder is the University Group Drive Structure. You can browse through this to your department to access what you will know as your N drive on campus.

You can now drag and drop files directly from your M or U drive. **Note**, that you will need to copy any files to your local machine in order to work on them, and then copy the files back to M.

Problems?

Contact the helpdesk on 01248 38 8111, or e-mail helpdesk@bangor.ac.uk.