

TextHelp Read and Write

What does it do?

Spell checker
Homophone checker
Read text aloud
Highlighting tool

Contents

Reading text aloud	
Reading a passage	p 2
Changing the voice settings	p 3-4
Changing how words are spoken	p 5
Reading text from the Internet and a PDF	p 6
Creating sound files	p 7
Spellchecker	
Basic use	p 8
Adding words to the dictionary	p 9
Changing the dictionary settings	p 10
Homophone checker	p 11

To read a passage

1. Highlight the passage of text you want it to read.



2. Then click on the green arrow.

To move to the next sentence

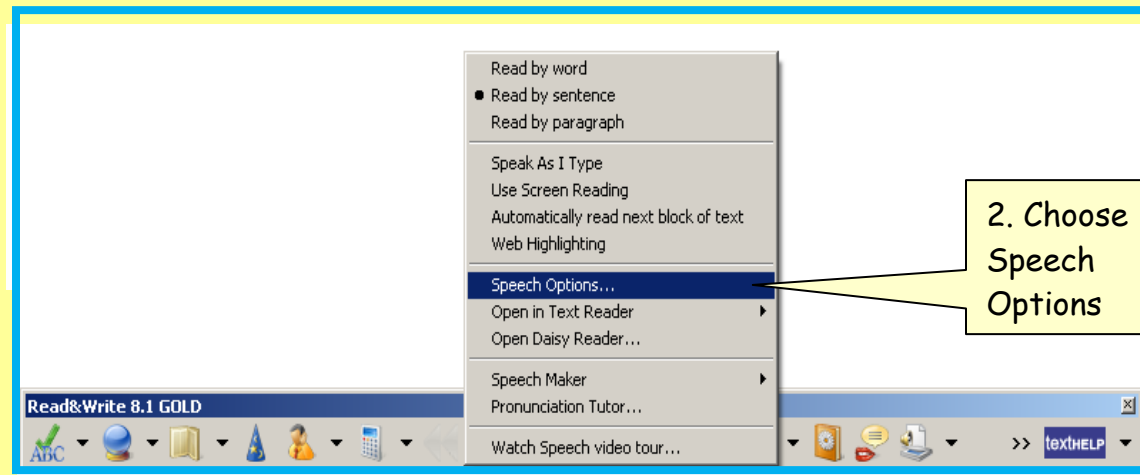


1. Click on the blue "fast forward" arrows.

To change the voice settings

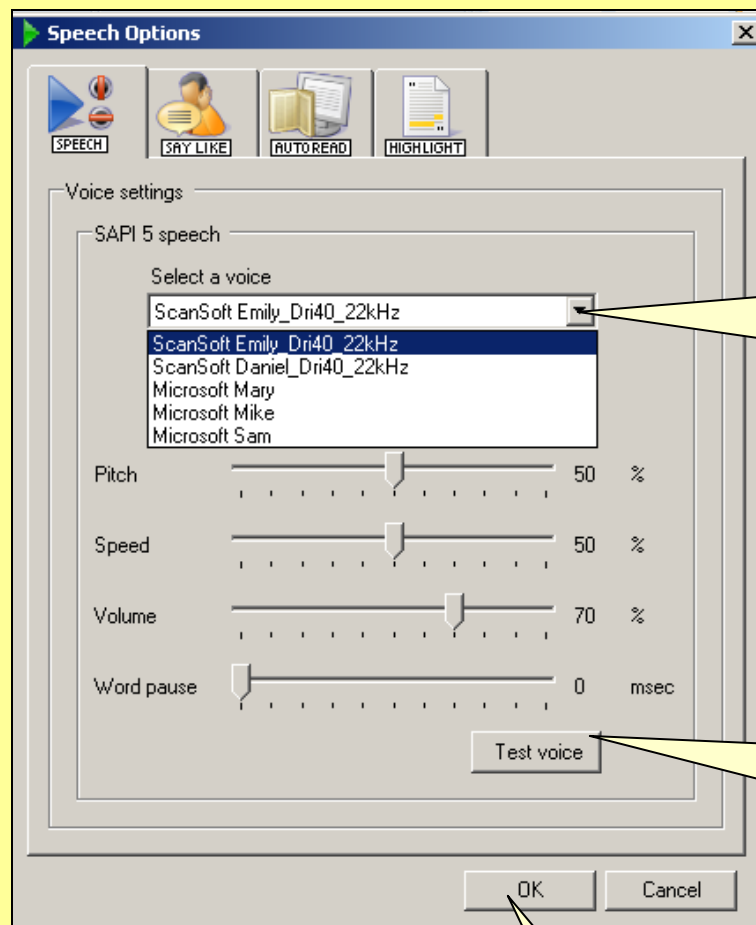


1. Click on the arrow.



2. Choose Speech Options

To change the voice settings (continued)



3. Choose a voice from the drop down box.

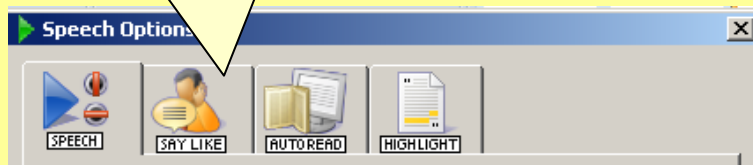
4. Click here for a preview of the new voice.

5. Click here when you're happy with the new voice.

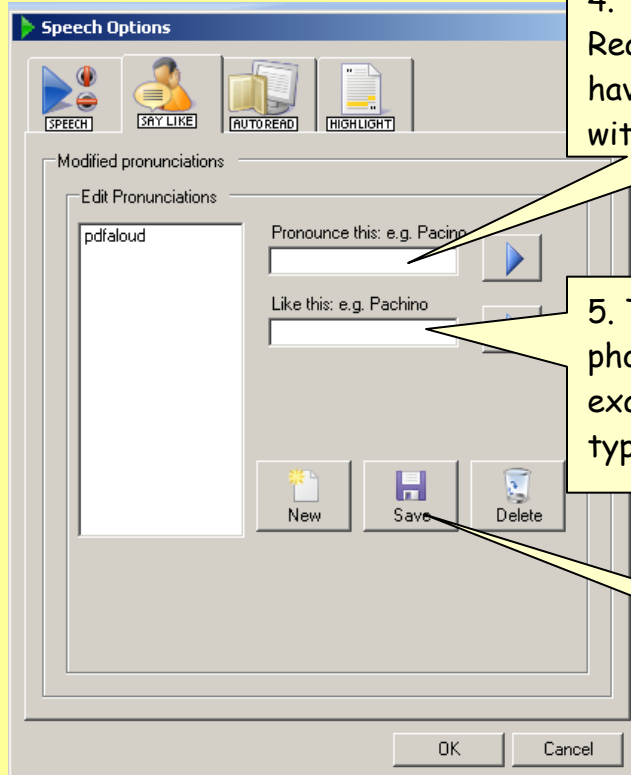
To change the pronunciation of a word.

Follow steps 1 and 2 for changing the voice settings, then;

3. Click on the "say like" tab.



4. Type the word Read & Write is having difficulty with.



5. Then type the word phonetically. For example for "menai" - type "men eye".

6. Then click save.

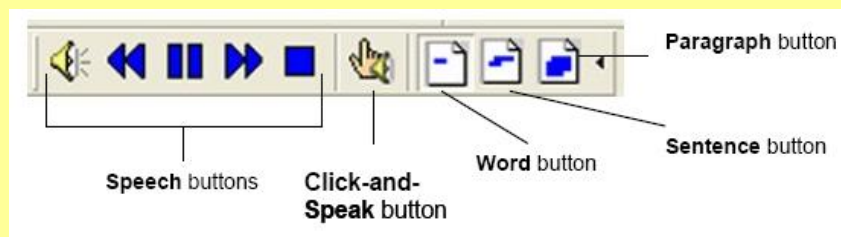
Reading text from the Internet



1. Click here and make sure the Web Highlighting option has a tick beside it.

Reading PDFs aloud

1. Close Read & Write text help
2. Open a PDF file, you should then see the PDFaloud toolbar



Word, Sentence and Paragraph buttons - These change the length of text that is read.

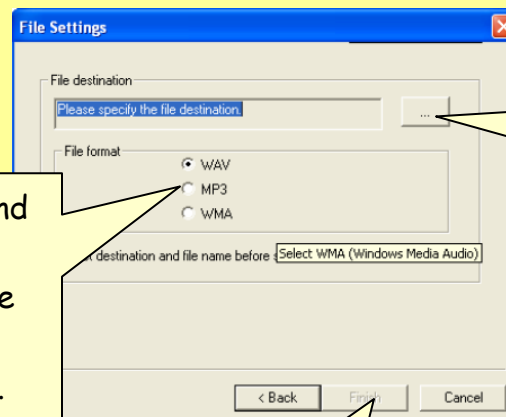
Creating sound files

1. Select the text that you want to convert into a sound file.



2. Click here to open speech maker facility.

3. Click on the **next** button twice.



5. Click here and select an appropriate file format (MP3 recommended).

4. Click here and locate the folder you want to save to

6. Click here to finish.

To run the spellchecker

1. Click here to open up spellchecker

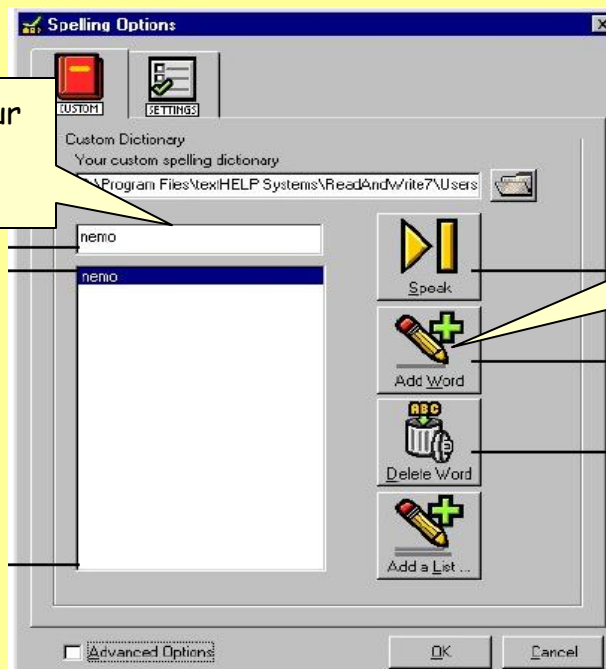


To add words into the dictionary

1. Click here to open up the spellchecker options.






2. Type your new word here.









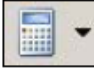

3. Click here to add the new word.

Homophone checker






Remember to turn off the homophone checker when printing,
otherwise all homophones will be highlighted

	Show Homophones - will highlight all homophones in the document. Homophones are words which sound alike but are spelt differently, for example 'for' and 'four' or 'witch' and 'which'. This can aid users in deciding if they have typed the correct spelling.
	Sounds Like - will display the Same Sounding Words window giving similar sounding words with definitions to help in determining which word is correct.
	Hide Homophones - will remove highlighting from homophones.

Glossary of functions

	Spell Check - Spell check a document, selected text or as you type
	Word Prediction - will provide a list of possible words as you type. Selecting the required word will type the rest of the word. For example typing man will produce a list of words beginning with the letters 'man', for example manage, manager, management . Use the F keys on the keyboard to select the word you require.
	Dictionary - will provide definitions of highlighted words. The definition can be read aloud.
	Show Homophones - will highlight all homophones in the document. Homophones are words which sound alike but are spelt differently, for example 'for' and 'four' or 'witch' and 'which'. This can aid users in deciding if they have typed the correct spelling.
	Sounds Like - will display the Same Sounding Words window giving similar sounding words with definitions to help in determining which word is correct.
	Hide Homophones - will remove highlighting from homophones.
	Calculator - both standard and scientific calculators are available. Calculators can be spoken aloud.
	Speech buttons - rewind, play, pause, fast-forward and stop. Text can be spoken by word, sentence or paragraph. This includes the Speech Maker facility which converts text documents into sound files which can be saved to CD.

Glossary of functions (continued)

	Scan - documents can be scanned and converted into editable text. Documents can be scanned directly into Microsoft Word.
	Fact Folder - a research tool which organises text and pictures from any application. Material can be organised by research category which can be transferred into Microsoft Word. Details about the material can be collected including the source, date accessed, website address.
	Fact Finder - a research tool to assist with internet searching. Web sites are organised by category including search engine. Fact Finder then provides a simple interface to search the web sites. Additional web sites can be added.
	Help - access Read and Write online help manual.
	Speech Input - Read and Write will convert speech into text