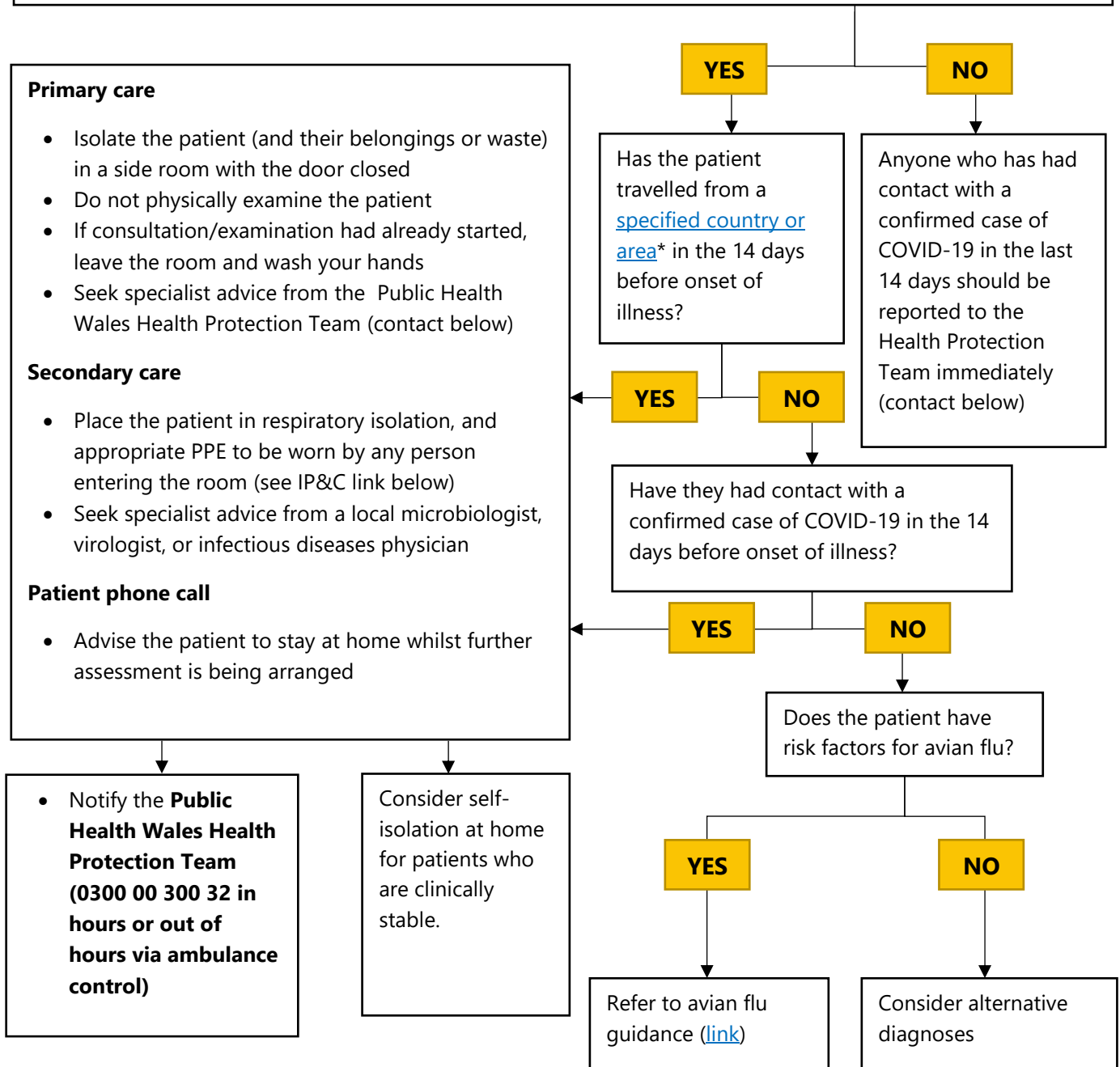


# Management of a suspected case of Coronavirus (COVID-19)

Does the patient have **EITHER**:

- severe acute respiratory infection requiring admission to hospital with clinical or radiological evidence of pneumonia or acute respiratory distress syndrome **OR**
- acute respiratory infection of any degree of severity, including at least one of shortness of breath (difficulty breathing in children) or cough (with or without fever) **OR**
- fever with no other symptoms



\* As of 25/02/2020, <https://www.gov.uk/government/publications/covid-19-specified-countries-and-areas>

Footnote - for further guidance

[Link to background information](#)

[Link to initial investigation of possible cases guidance](#)

[Link to infection prevention and control guidance](#)

[Link to primary care management guidance](#)

[Link to clinical diagnostic laboratories guidance](#)