

# Diwrnod Cynefino i Arholwyr Allanol

## External Examiners' Induction Day

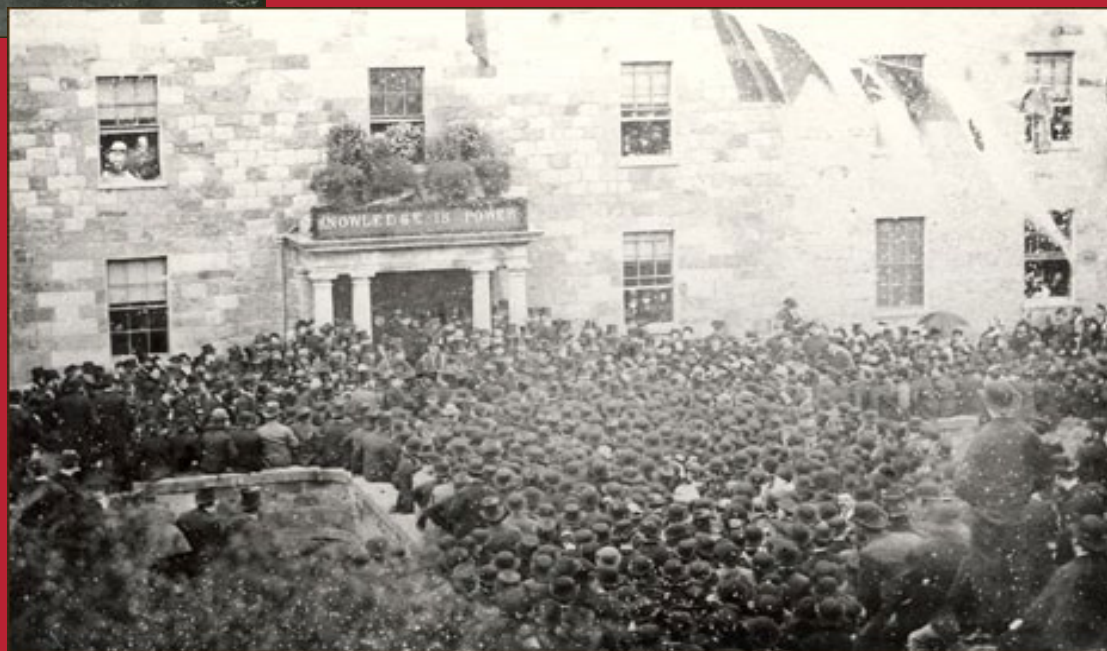
# HISTORY

- Founded in 1884
- Joined Federal University of Wales 1893
- Incorporated:
  - St Marys College 1976
  - North Wales College of Nursing 1992
  - North Wales College of Midwifery 1993
  - Coleg Normal 1996
- University of Wales, Bangor 1997
- Degree Awarding Powers: “Bangor University” 2007



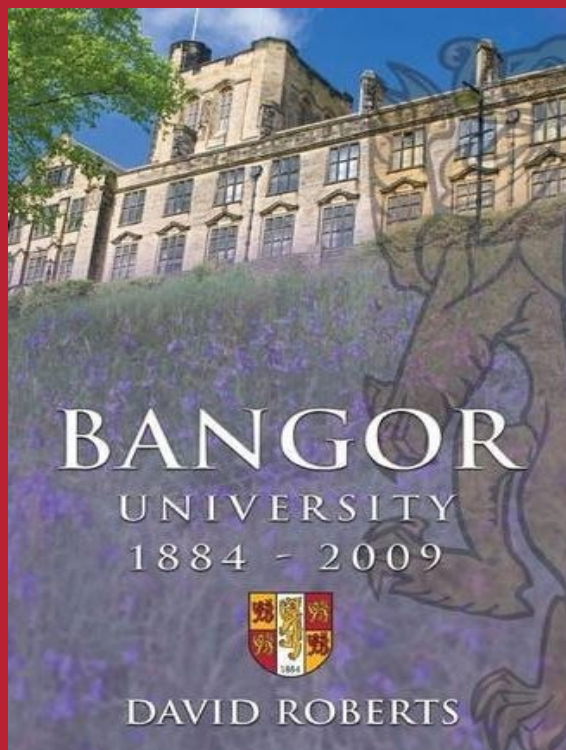


PRIFYSGOL  
**BANGOR**  
UNIVERSITY





PRIFYSGOL  
**BANGOR**  
UNIVERSITY



*"Along the way the story takes some surprising twists and turns. It is packed with incident - there is heroic struggle, personal endeavour, scandal, financial crisis, political controversy, protest and conflict. But there is also outstanding academic achievement and the creation of a distinctive ethos and character".*





# MISSION

“A strong, confident institution *recognised regionally, nationally and internationally* as a centre of excellence for its varied portfolio of teaching and research, and for the unique, multicultural, inclusive experience it provides for its staff and students”.

# VALUES

- Safe, welcoming and inclusive environment
- Pride and self-confidence
- Individuality of our offer to our students
- Embrace and value the diversity of our staff and students
- The breadth of our teaching and research activities provides the best platform from which to build with confidence
- Part of a broader regional community
- Contribute positively to the economy, society, environment, language and culture of the region
- Significant emphasis given to students as partners
- Contributing to the sustainability of the University, the region, and the world

# STRATEGIC PRIORITIES



- An Excellent Education & Student Experience
- Enhancing Research Success
- An International University for the Region
- Strong Welsh Language, Culture & Civic Engagement
- Strategic Enablers
  - People
  - Resources
  - Governance & Management
  - Branding & Marketing
  - Sustainability

# QUALITY ENHANCEMENT REVIEW 2018



- Bangor University **meets** the requirements of the ESG Part 1 for internal quality assurance
- Bangor University **meets** the relevant baseline regulatory requirements of the Quality Assessment Framework for Wales

*This is a positive judgement, which means the University has robust arrangements for securing academic standards, managing academic quality and for enhancing the quality of the student experience.*

No recommendations, three commendations and three affirmations





# FACTS & FIGURES

- 10,500 students (8,800 full-time; 1,700 part-time)
- 2,000 staff – 600 full-time academic / research staff
- Turnover: £163M
- Research grants: £30M



# STUDENTS

- Roughly 85% full-time
- 33% postgraduate
- 20% overseas
- 95% state schools
- 38% social classes NS-SEC classes 4,5,6,7
- 10% undergraduates in receipt of DSA (disabled students)
- 4% non-retention following year of entry





# RESEARCH & TEACHING

- Link between teaching and research/scholarship
- 85% of research rated top two tiers of research quality
- Top 30 in the UK for research impact
- 7 of 9 submissions achieved a GPA greater than 3.0

# COLLEGE STRUCTURE

**Arts, Humanities  
and Business**

**Business School**

**History, Law and  
Social Sciences**

**Arts, Cultures  
and Languages**

**Human Sciences**

**Educational Sciences**

**Medical and  
Health Sciences**

**Human and  
Behavioural Sciences**

**Environmental Sciences  
and Engineering**

**Computer Science and  
Electronic Engineering**

**Natural Sciences**

**Ocean Sciences**



## ACADEMIC STRUCTURE & PROGRAMMES

- 3 Colleges – 9 Schools
- Bangor College China (Changsha)
- Roughly 220 undergraduate degree programmes
- 172 taught postgraduate courses
- 100 postgraduate research courses
- Welsh medium degrees; 1400 students

Around 600 students on validated programmes in Grŵp Llandrillo Menai

Number of students studying at the following overseas institutions:

Tashkent – 1800

Singapore – 50

Malaysia – 130

Bahrain – 250

Changsha – 500





# DECISION-MAKING STRUCTURE

