



North Wales Organisation for
Randomised Trials in Health & Social Care
Sefydliad Hap-Dreialon Iechyd
a Gofal Cymdeithasol Gogledd Cymru



PRIFYSGOL
BANGOR
UNIVERSITY

North Wales Organisation for Randomised Trials in Health & Social Care **NORTH**

21 22



2021 - 22 Annual Report

2021 - 22 Annual Report

CONTENTS

Foreword	3
NWORTH'S MISSION	5
Organogram	6
The team	7
Highlights	8
Collaboration Development.....	8
Trial Oversight and Delivery.....	8
Professional development.....	8
Patient, Public and Stakeholder involvement and engagement.....	9
Highlights - Studies led in Wales	10
iSupport for Dementia Carers Study – an update provided by Greg Flynn, Trial Manager.....	10
ThinkCancer!	11
RHiNO	12
Highlights - International reach	12
Highlights - Long COVID study	13
Highlights - Dental and Oral Health work.....	14
Highlights - Methodological developments.....	16
How trials are being undertaken in rural communities	16
How do Welsh-speaking communities view research	16
Public perception of Clinical research.....	17
Statistics group.....	17
RDCS	17
Key achievements (infographic).....	18
PARC-Bangor	19
Community of Scholars	20
Dissemination and engagement	20
Conclusion.....	21

FOREWORD

This is the second year of the three-year infrastructure grant with Welsh Government and Health and Care Research Wales.

This report highlights our achievements during 2021-2022 and revisits the aims and objectives that we set out to achieve over this funding period (2020-23). Finally, we look forward to the final year of this funding cycle.

At the start of the funding, we set a number of key aims:

1. To develop our research collaborations and seek to increase the level of research activity across Wales;
2. To maintain the quality of our internal processes in trial management, oversight and delivery;
3. To promote professional and methodological development
 - a. Ensuring all our staff are trained and supported;
 - b. Exploring methodological approaches to promote stakeholder engagement and build capacity in North Wales;
4. To continue to embed the involvement and engagement of patients and the public in all that we do; and
5. To continue our research through the medium of Welsh and provide support for the infrastructure across Wales.

NWORTH's mission is to conduct clinical trials and studies of complex interventions of the highest quality, delivering research and impact for Wales and beyond, as well as advancing methodological developments in clinical trials research.

We have identified an ambitious programme of work for the period of 2020 – 2023 which is driven by five key work streams: -

1. Collaboration Development - where we seek to maintain our consistently high success rate whilst also increasing grant activity and grant capture in Wales. Further details on our portfolio development and grant capture activity can be found below.
2. Trial Oversight and Delivery - where we will maintain the high standards of quality, timeliness and governance of all our deliverables and outputs.
3. Professional and methodological development - where we are focusing on methodological approaches to stakeholder engagement and building research capacity in North Wales.
4. Patient and Public Involvement and Engagement – this is central to everything we do at NWRTH and is embedded in all our activities. We plan to expand our public involvement and engagement group, Population Advice for Research Committee, (PARC-Bangor) with special emphasis on diversity.
5. Research through the medium of Welsh– we will continue our work to increase greater awareness and access to research opportunities through the medium of Welsh and the “active offer” of this.

Through these work packages, we aim to increase the level of Welsh-led activity at the Unit and build local research capacity to foster a healthy research environment across North Wales.

We seek to understand the local research environment and the barriers that many healthcare professionals experience in starting out on their research journey.

Only by understanding these local issues will we be able to address them and take the steps required to foster research development and growth.



HIGHLIGHTS:

Collaboration Development

During 2021-2022 we submitted 11 funding applications and added five new studies to our portfolio with a total grant value of £3.1M. Two of our active studies have also secured additional bolt-on funding for additional work alongside their already full research programmes.

We currently have 18 active studies on our portfolio with a total grant value of £28.2M. We have an active pipeline of five studies in development with another three studies currently in submission. These studies are with both repeat and new collaborators who have approached us on recommendation.

Professional Development

NWORTH staff members have continued to work seamlessly online over this period and are beginning to adapt to a more dynamic way of working going forwards mixing home and office-based working.

Staff have consistently adhered to all restrictions and requirements throughout the pandemic and continue to act in a responsible and conservative way towards the ongoing circulation of COVID19. However, NWORTH are looking forward to being able to freely access our offices and resume face to face contact and the development opportunities that come with that.

Trial Oversight and Delivery

Over this period NWORTH studies recruited 1609 participants with 226 (14%) of those being participants recruited from Wales. Recruitment for many studies after the 'lock-downs' is now beginning to recover.

As more studies become active after the COVID pandemic NWORTH staff were able to support each study team to ensure their re-start was as efficient as possible. This included considering and advising on adaptations to the flow and design of studies, particularly as many of the anticipated 'usual care' pathways have been affected and altered during this period. In some cases, it is still unclear whether the treatment pathways are to remain in their current delivery format or revert to something more resembling pre-pandemic so has meant a continual review pattern for these studies.

The underlying quality and rigour of our internal processes and regulatory compliance have ensured that throughout these challenging times we have maintained our support and service provision to our studies. Our internal processes and procedures have been revisited this year to ensure they are up-to-date post-Brexit.

Patient, Public and Stakeholder Involvement and Engagement

We are collaborating with Betsi Cadwaladr University Health Board on the Community of Scholars pilot which aims to develop the research infrastructure in North Wales. We are also actively linked with the Centre for Ageing and Dementia Research, Wales Centre for Primary and Emergency (including Unscheduled) Care Research and Welsh Dental Branch.

This ensures that we are active in our engagement with the Centres and Units across the Health and Care Research Wales infrastructure. It will also be used to increase the number of opportunities for interdisciplinary working to strengthen research infrastructure development across Wales (e.g., in ageing and dementia, primary care and oral health). We seek to actively disseminate our findings using the Support and Delivery Centre. Development of the collaborative relationship with Professor Colin Rees has grown with added collaborations developing into NIHR PGfAR grant submission focusing on weight loss via referral through colonoscopy clinics.

Across the Health and Care Research Wales infrastructure we have continued to work with the Centre for Ageing and Dementia Research (CADR) on the delivery of Professor Gill Windle's iSupport study, North Wales Centre for Primary Care Research (NWCPCR) and PRIME in delivering the WICKED research programme led by Professor Clare Wilkinson.

Both projects have seen the successful growth of these collaborations with the additional bolt-on funding secured for iSupport and the submission of the grant application (charitable funder) for a definitive trial of the ThinkCancer! intervention developed as part of the WICKED programme.

NWORTH continues to collaborate closely with Health Care Economics Cymru (HCEC), bringing the group into projects where health economic evaluation would add value to proposed evaluations and in the continued delivery of complementary statistical and economic evaluations of our funded studies.

Our continued collaboration with Kings College London has seen submissions with collaborators from this group in both dental and mental health disciplines, areas of recent strength for the NWORTH portfolio. These links have continued to allow us to explore potential projects with funders from industry.

The success of the submission to the NIHR Global Health Research group means we are working internationally with teams from Lebanon and Kenya to deliver research relevant to both countries.

Through the Celtic Advanced Life Science and Innovation Network (CALIN) NWORTH has been introduced to a University College Dublin spin-off company. This company is developing a medical device to be used for diagnosing Parkinson's disease among other ventures. We have been exploring the possibilities for collaborating further and supporting this company through its research journey.

Collaborations this year have again included a number of returning researchers who we have developed good working relationships with over the years but also a number of new collaborators that were referred to us by previous collaborators. The networks we have established through our conscientious work ethic and agile responsiveness to delivery of high-quality studies is now bringing fruition to a widening of the network by these positive referrals.

STUDIES LED IN WALES:

iSupport for Dementia Carers Study – an update provided by Greg Flynn, Trial Manager

In November 2021, two additional projects linked to the iSupport for Dementia Carers Study were recommended for (approximately £470,000 of additional) funding by the NIHR.

These are led by the iSupport study PIs from UCL and University of Strathclyde. The UCL-led project will translate and culturally adapt iSupport into three languages: Bengali, Urdu, and Punjabi; and the Strathclyde-led project will adapt a physical activity app to personalise it for dementia carers. Both projects include feasibility workstreams to assess whether larger trials could be set up to measure the effectiveness of the adaptations.

HIGHLIGHTS FOR THE STUDY APR21 – MAR22:

The iSupport study trained and set-up 3 research sites, and using the Join Dementia Research database, researchers at these sites have assessed and randomised 82 participants over the first 4 months of recruitment, which is 32 participants [64%] ahead of the planned target of 50 at this stage. People randomly assigned to the intervention arm of the trial are given access to iSupport, an e-health programme developed by the World Health Organization, and people in the comparison arm are sent a booklet produced by the Alzheimer's Society.



This means both groups are offered an intervention which we hope will be of some benefit to them. Two oversight committee meetings have been held, which have informed the study's procedures for recruitment and data monitoring, and the committee members were positive about the progress of the study.

The study's outcome measures have been translated into Welsh, and the study's two primary outcome measures have also been linguistically validated. The validated measures are available to other researchers through the translation unit's website, and it is the first time these measures have been made available in Welsh. All participant-facing documents and the study intervention have also been translated into Welsh, and the intervention is undergoing pilot testing with Welsh-speaking participants to ensure it is culturally appropriate.

In February and March 2022, young carers (ages 11-17) and professionals who work with young people met over Zoom with the researchers at Bangor University. These focus group discussions will be used to adapt iSupport for young carers. Similar focus groups have been held with carers of people with rarer types of dementia, and the intended result of these work packages is to produce adapted versions of iSupport that are personalised and more appropriate for specific groups of people.

ThinkCancer!

During this year, the £800k WICKED research programme concluded. The programme culminated in the ThinkCancer! feasibility trial recruiting GP practices from across Wales successfully recruiting, training and collecting data from practices at a particularly difficult time across primary care services.

The study concluded with a grant application to Cancer Research Wales for further funding to conduct a full-scale multi-centre definitive RCT of the developed complex intervention (noted above as in submission).

Wales, like other UK countries, has relatively poor cancer outcomes and late diagnosis is a major contributor. This WICKED research programme concentrated on the primary care interval: the time between presentation of symptoms by patients and referral. A complex intervention to support primary health care teams was developed, with the intention of reducing the time to diagnosis and improving cancer outcomes. (<http://wicked.bangor.ac.uk/>)

Linking with other Health and Care Research Wales infrastructure units, such as Wales Centre for Primary and Emergency Care (PRIME) and Health and Care Economics Cymru (HCEC) for delivery of the study, NWOORTH contributed quantitative study design expertise, provided an electronic MACRO database, randomisation, and statistics towards the study. The complexity of the study design and the intricacies of collecting the relevant primary care data demonstrated the importance of the piloting and feasibility work undertaken and has led to a much more robust trial design being submitted for consideration for funding.

Development of the ThinkCancer! intervention and the protocol for the feasibility study have now been published and the feasibility results have been submitted to the funder before being developed into a feasibility results paper.

www.ncbi.nlm.nih.gov/pmc/articles/PMC6189786/

<https://pilotfeasibilitystudies.biomedcentral.com/articles/10.1186/s40814-021-00834-y#citeas>



Alun Surgey, Part time GP and Academic Clinical Fellow, on behalf of the WICKED team said:

"Throughout the 5-year programme that included a phase 2 randomised controlled feasibility study of the novel ThinkCancer! intervention, and currently the planning and preparatory stages of a large phase 3 trial, we have been heavily supported by NWOORTH, the North Wales Organisation for Randomised Trials in Health, Bangor University

We have benefitted from a close and supportive working relationship with the experts at NWOORTH who have been heavily involved in the planning and execution of the WICKED programme and the successes achieved so far. A few examples include;

- Expert guidance on all aspects of trial planning, trial protocols, sample sizes, recruitment, delivery and data collection
- Delivery of a randomised feasibility study to primary care teams in Wales
- Contributing to weekly operational group meetings, monthly trial management meetings and reporting to trial steering committee, along with providing ad hoc advice, support and guidance to the research team
- Data interpretation and report writing
- Support with dissemination activities including conference presentations and scientific papers
- The application for a second substantial programme grant to deliver a phase 3 trial to assess the effectiveness and cost effectiveness of the ThinkCancer! intervention

The ThinkCancer! feasibility trial was successful in its aims and objectives thanks to the support of the NWOORTH team, and that along with other key findings from the WICKED programme have contributed to the following scientific outputs and achievements;

- Presenting written and oral evidence to the Welsh Parliament Cross Party Group on Cancer to inform policy on early diagnosis, including the support of Rapid Diagnostic Centres
- Scientific papers published, in publication and being prepared
- Conference presentations delivered or accepted at CRUK Early Diagnosis, SAPC (regional and main), PRIME Centre Wales, CAPri (Toronto), RCGP/ WONCA London
- Nominated for 2022 Moondance Cancer Initiative award - Innovation in Early Detection and Diagnosis category"

RHiNO

Another Welsh led study which concluded analysis in late 2021, the MRC funded RHiNO RCT published its final results paper.

WThe RHiNO study focused on why some children who were born early have breathing problems and how best to treat these breathing symptoms. NWORTH contributed a wealth of information to this study delivering methodological, statistical, trial management, data capture and collection expertise across the lifecycle of the study. The culmination of this project has seen the results published in JAMA paediatrics

(<https://jamanetwork.com/journals/jamapediatrics/article-abstract/2786783>)

with NWORTH trial statistician, Dr Nia Goulden as lead author. doi:10.1001/jamapediatrics.2021.5111



International reach

On the other end of the spectrum from Welsh based studies NWORTH have been successfully involved in the set-up and initial phases of the international SUMMIT study (SUpporting Mothers' Mental health with Interpersonal Therapy: A large multi-site study evaluating the impact of Group Interpersonal Psychotherapy (IPT) In Lebanon and Kenya).

This £3.8million study funded by NIHR - Research and Innovation for Global Health Transformation (RIGHT) programme in Kenya and Lebanon will address the currently limited evidence concerning effective interventions to treat post-natal depression in Low and Middle Income Countries.

The study will test whether a WHO-recommended psychological therapy modified to match local priorities, delivered sustainably within existing healthcare systems, can lead to improvements in key measures of early child development alongside improvements in maternal mental health.

www.ucl.ac.uk/news/2020/may/ps38m-funds-international-psychotherapy-trial-new-mothers

www.ucl.ac.uk/psychoanalysis/research/summit

This international collaboration between UCL Psychology and Language Sciences, UCL Institute for Global Prosperity, NWORTH (Bangor University), Columbia University, University of Saint Joseph in Lebanon, University of Nairobi and HealthStrat in Kenya is progressing well with initial milestones due to be met soon.

Long COVID study

NWORTH is pleased to be part of one of the 15 projects that was awarded funding as part of the £19.6M awarded by NIHR to help diagnose and treat long COVID.

www.nihr.ac.uk/news/196-million-awarded-to-new-research-studies-to-help-diagnose-and-treat-long-covid/28205

CICERIO (Cognitive Impairment in Long COVID: PhEnotyping and RehabilitatiOn), led by Dr Dennis Chan from UCL is focused on the up to 75% of people who whilst experiencing symptoms of long COVID report problems with memory, attention, or other cognitive functions – collectively known as 'brain fog'.

www.ucl.ac.uk/news/2021/jul/long-covid-ucl-leads-ps8m-studies-treatments-and-diagnosis

Dr Dennis Chan the Chief investigator from UCL states

“Cognitive impairment, informally known as 'brain fog' is a major component of long COVID that compromises people's daily activities. The aim of this study is to first understand better the nature of this 'cognitive COVID' in terms of the functions affected and the associated brain imaging changes, and second, to test whether neuropsychological rehabilitation can improve people's outcomes.”

This study closely incorporates patient and public involvement led by the PPI Co-investigator Jason Lim, who initially caught COVID in March 2020 and has suffered with continuing symptoms since.

<https://www.uhsussex.nhs.uk/uhsussex-patients-in-pioneering-long-covid-study/>





Dental and Oral Health work

Dental studies funded by NIHR led by Professor Paul Brocklehurst and supported throughout by NWORD culminated in a strong REF 2021 impact case study submitted to the UoA 3 (Allied Health Professions, Dentistry, Nursing and Pharmacy) – the impact of the work described by this case study was included in the Health and Care research Wales 'Making a difference' report in October 2020.

The associated dental teaching unit in North Wales has now been fully developed and has continued to grow in the recent period.

The work from the dental contract reform process and findings from studies NWORD has been involved with concluded with all findings being brought together into a letter of recommendations which has been submitted to the Welsh Government Health Minister, Eluned Morgan.

Finally the Chief Professions Officers Medicines and Mechanisms consultation exercise which findings from the studies fed into has been agreed:

www.england.nhs.uk/medicines-2/chief-professions-officers-medicines-mechanisms-programme/

Methodological Developments

Methodological work at the unit has continued at pace during this period focusing on getting stakeholder input into our research infrastructure questions:

How trials are being undertaken in rural communities

A literature search was conducted and found several barriers to trials being undertaken in rural communities. Following School approval, Bangor University research staff were asked to complete a (bilingual) survey focusing on experiences and perceptions of conducting research and trials in rural communities. To further build on this after expanding to universities in mid-Wales the group are submitting an IRAS application to approach and include Welsh NHS researchers in this survey. Results from the survey and literature search will be combined into a publication upon completion.



How do Welsh-speaking communities view research

A bilingual online survey was circulated in July and August 2021 with two aims 1) to understand if Welsh speakers take part in health and clinical research or not and 2) to understand what hinders or facilitates participation in research.

170 Welsh speaking adults completed the survey with only 29% indicating they were willing to participate in health research – Main reasons for not participating were Depends on the topic of the research (40%), the need for more information (32%) and fear of something going wrong (24%). Interestingly 83% of the sample had never been invited to take part in health research and 85% had not heard of the 'Active Offer' of Welsh.

Additionally a systemic review of the literature has been conducted focusing on 'Minority Language users in health and social care research' – this is currently published as a pre-print (www.medrxiv.org/content/10.1101/2022.04.27.22273307v1.full.pdf) with the intention to submit to a peer-reviewed journal.

The conclusions of this work indicated there are many reasons why Welsh speakers do not take part in health research with more detailed qualitative work required to understand how to improve the view of research and ensure that Welsh is seen as a language of equal status in health and clinical research studies.

Public perception of Clinical research

The next work stream focused on a UK-wide survey to members of the public.

The Public Perceptions of Clinical Research Survey was launched in September 2021 and finished at the end of February 2022. The purpose of this PPI survey was to understand how the public perceive clinical research and how they feel about participating in research, both as a recruited participant and public involvement contributor.

The PARC-Bangor members have helped with shaping the questionnaire. With a total of 101 responses, statistical analysis is now underway with an abstract submitted for dissemination at the International Clinical Trials Methodology Conference (ICTMC) 2022.

Statistics group

Further work within the statistics group has seen the development of:

- Mapping the behaviour of the dynamic adaptive randomisation algorithm – a third internal technical report being developed on the impact of the addition of new sites to an already recruiting trial – a scenario often seen with trials trying to reach recruitment targets. Understanding how the algorithm behaves in this context will allow us to respond quickly in instances where trials need to amend their studies.
- Researcher bias – the previously reported successful MPhil study has been distilled into a paper that is currently under review with Trials journal.
- Defining and estimating the minimal clinically important difference – a paper entitled "In Pursuit of Clinical Significance - Raising the Bar" has been submitted for consideration in Clinical Trials: Journal of the Society for Clinical Trials.

Research Design & Conduct Service

The North and Mid Wales RDCS provided a free webinar focusing on the Research for Patient and Public Benefit (RfPPB) Funding Scheme.

This covered background on the RfPPB funding scheme, advice and tips for applicants and talks from previous applicants about their experience. The event was attended by 6 participants from across Wales.

KEY ACHIEVEMENTS

Core metrics
Reporting
Period
2021-2022

11 unique
11 unique grant applications submitted, 8 to NIHR NETSCC schemes

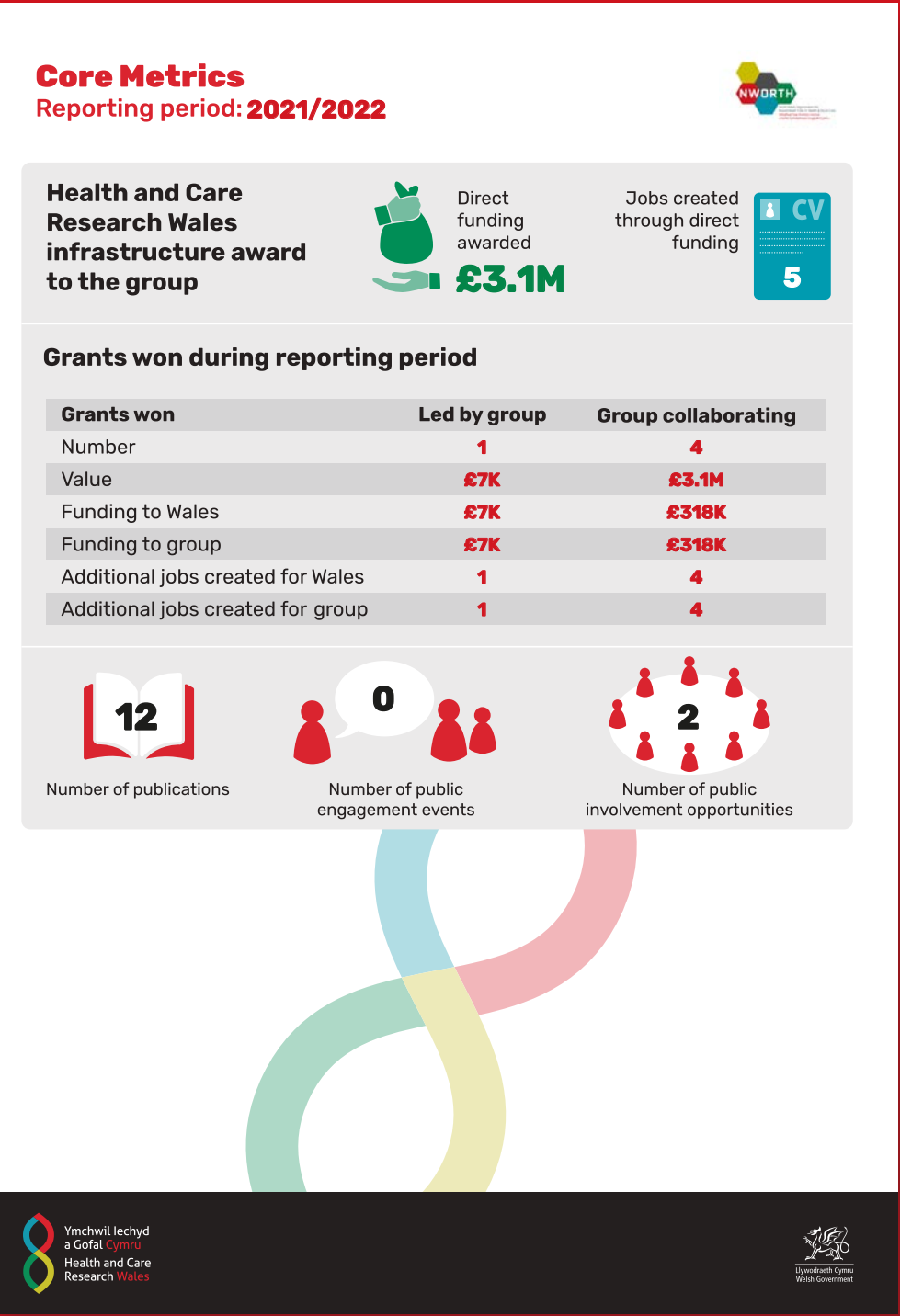
5 grants
awarded

£3.1M
in total grant funding awarded (plus additional bolt-on funding for two active projects)

£318K
accruing to Wales

12 articles
published

£3.3M
currently in submission



5 studies
awarded, 1 study led by
Welsh Chief investigators

1609
total number of
participants recruited

14%
of Welsh participants
recruited

PARC-BANGOR

Unfortunately, PPI continued in a virtual format throughout this year rather than in the preferred face to face format and while still limiting we have continued to engage widely.

Population Advice for Research Committee, (PARC-Bangor) is our public involvement and engagement group. Members are instrumental in reviewing and inputting to our studies in development. They use their experience as patients, service users, carers, or family members to feedback on research priorities, research design, funding applications, and study documentation. Members also contribute to study committees and management groups. They also input to our Executive meetings and have played a key role in some of our methodological developments this year.

As described earlier PARC-Bangor members have been instrumental in the development, design and dissemination of the surveys developed as part of NWORDH's methodological work streams. It is envisaged that as the dissemination elements of these begin to take shape the group will continue to contribute valuable insights into the interpretation and provide suggestions of potential avenues of dissemination. Our randomisation system also requires an update, and we intend to use an external contractor who has previously worked for NWORDH to undertake this work.

PARC-Bangor

Pobl yn Cyfrannu at Ymchwil
Population Advice for Research Committee

In April 2021, PARC-Bangor group met to allow members to share their views and ideas on PPI involvement in research.

NWORDH staff have also been involved in the Health and Care Research Wales Public Engagement and Involvement Forum Organising Group which delivered its first two forums in May 2021 with excellent feedback.

PARC-Bangor members were also approached for possible involvement in the UK-wide PANORAMIC study (Platform Adaptive trial of NOvel antiVIRals for eARly treatMent of covid-19 In the Community) which was specifically looking for PPI representatives from North Wales.

On the 8th February 2022 PARC-Bangor members met to hear about updates from the unit and to be informed of the departure of Professor Paul Brocklehurst and introduce Dr Zoë Hoare as the interim director, whom many of the group had already met at earlier engagement events. This provided some continuity for the group. We anticipate convening the group again soon to plan the next vision of work in support of the unit.

PARC-Bangor has maintained membership at a total of 24, who come from all corners of North Wales. One third are Welsh speakers.

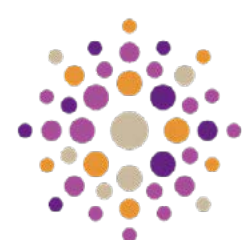
The national standards continue to guide all our PPI work. We consistently strive to offer inclusive opportunities and ensure that all our public members can contribute in either Welsh or English. We time our meetings to allow maximum attendance and are cognisant of the working, family, and caring commitments of members. We value all contributions and meetings encourage respectful debate that arrives at a consensus. We have a member of PARC-Bangor sitting on our Executive Committee and all our key strategic documentation and decisions are therefore reviewed by a public member.

Studies that have been added to NWORDH's portfolio are presented and discussed at the PARC-Bangor meetings ensuring engagement with the ongoing portfolio at NWORDH. There is an expectation that locally led studies will engage with PARC-Bangor to ensure they benefit from the valuable contribution the PPI representatives can make to not only the ongoing research portfolio but additionally now to the methodological work that NWORDH is delivering. We anticipate our outputs from the research work streams will be positively accentuated by the involvement of the voices of experience from our PARC-Bangor group.

COMMUNITY OF SCHOLARS

The Community of Scholars celebrated its first birthday on 9th February 2022. Highlights from this year included:

- A new podcast by the title 'Research Path', on how Simon Gill (Primary Care Pharmacist) has become an 'Accidental Researcher', was added to the website in August 2021.
- The first webinar held was the Research for Patient and Public Benefits (RfPPB) Funding Scheme Webinar on 13th September 2021. The guests were Marc Boggett – Health R&D Grants Team Lead (Welsh Government); Rachel Corbett – Research Manager for RfPPB Scheme (University of Southampton); Jason Horsley – Consultant in Public Health for RfPPB Scheme (University of Southampton); Lynne Grundy – Associate Director Research and Innovation (Betsi Cadwaladr University Health Board); Joanne Goss – Advanced Practitioner Audiologist (Betsi Cadwaladr University Health Board) and Rachel Evans – RDCS Lead and Senior Statistician at NWORD Clinical Trials Unit. The webinar had 3 attendees and on the CoS website the audio recording was played 10 times.
- The second webinar held was the NHS Research Time Award (RTA) Webinar on 6th October 2021. The guests were Michael Bowdery – Head of Programmes, Research and Development Division (Welsh Government); Carys Thomas – Head of Research and Development Division (Welsh Government); Emma Small – RTA Call Manager (Welsh Government); Lynne Grundy – Associate Director Research and Innovation (Betsi Cadwaladr University Health Board); Adam Mackridge – Strategic Lead for Community Pharmacy (Betsi Cadwaladr University Health Board) and Rachel Evans – RDCS Lead and Senior Statistician at NWORD Clinical Trials Unit. The webinar had 6 attendees and on the CoS website the audio recording was played 3 times. There was a good discussion between the guests and attendees during the live webinar.



Cymuned o Ysgolheigion
Community of Scholars

Dissemination and Engagement:

It has been another year full of promotional activity and engagement, (albeit continuing virtually). Shifting our emphasis virtually we have highlighted the following events:

- Health and Care Research Wales 6th Birthday on 14th May 2021
- International Clinical Trials Day 2021 –Highlighting the valuable work the NWORD has contributed to
- NWORD's 14th Birthday on 28th June 2021
- ThinkCancer! study protocol promotion
- PPI Survey promotion
- Rural communities Survey promotion
- Promoting the Health and Care Research Wales 'Where would we be without research?' campaign
- RDCS RfPPB webinar promotion

In 2021-22, we had 62,000 impressions on Twitter and 1,134 engagements. We tweeted 150 times and gained 29 followers.

CONCLUSION

This year has been another successful and busy year for NWORD, with studies emerging from the COVID induced pauses and the continuation of the development of the portfolio.

The team's ability to adapt and respond to the varying demands placed upon them has demonstrated the continued resilience NWORD has. The robust processes and procedures that the unit has developed over the years and in response to the pandemic means that we have consistently delivered to our portfolio of studies.

The commitment to our mission and our flexible collaborative approach to working with our study teams have shown dividends in both repeat business from collaborators but also our network of collaborators recommending NWORD as a CTU to collaborate with. This year in particular has seen a growth in our collaborative network from that perspective.

As we enter the final year of this funding award NWORD is looking forward to delivering on our keys aims stated and ensuring that the reach from our methodological work is accentuated and disseminated widely. For this, we are planning to engage with PARC-Bangor who as always have provided invaluable insight into our work. Finally, we are looking forward to planning the next steps for NWORD.

CONCLUSIONS



North Wales Organisation for
Randomised Trials in Health & Social Care
Sefydliad Hap-Dreialon Iechyd
a Gofal Cymdeithasol Gogledd Cymru

NWORTH CTU
Bangor University
Y Wern,
Normal Site,
Holyhead Road,
Bangor,
Gwynedd,
LL57 2PZ

01248 388095
karen.law@bangor.ac.uk

nworth-ctu.bangor.ac.uk