



Easy to Reach

Anglesey	15 Minutes	Chester	60 Minutes
Holyhead	35 Minutes	Porthmadog	35 Minutes
Llandudno	40 Minutes	Liverpool/Manchester	1 Hour 40 Minutes
Rhyl	55 Minutes	Aberystwyth	1 Hour 50 Minutes

Admission Prices 2012:

Adult	£7.75 to £10.95	Family 2+2	£26.50 to £39.50
Child	£7.25 to £10.45	Family 2 + 3	£33.50 to £48.50
Senior	£7.25 to £10.45	Family 2 + 4	£39.50 to £57.50

Admission varies with the time of year. Please see website or call for details. Disabled, group, school and student discounts available. NB. During Low/mid season, activities will be open on a rota system.

BIG GREEN OFFER!

Offer valid till 4/11/12. Arrive by bike or bus and get a FREE drink for each person (show ticket or bike)! Bus 72 from Bangor stops at Greenwood Mon-Sat Whitsun/summer holidays. Other times stops at Y Felinheli P.O or Gors Bach pub near Bethel. For bus numbers call 0871 200 2233 Traveline Cymru (quote postcode LL56 4QN)

Open daily during February half term and 17th Mar. to 4th Nov. See website for winter opening times.

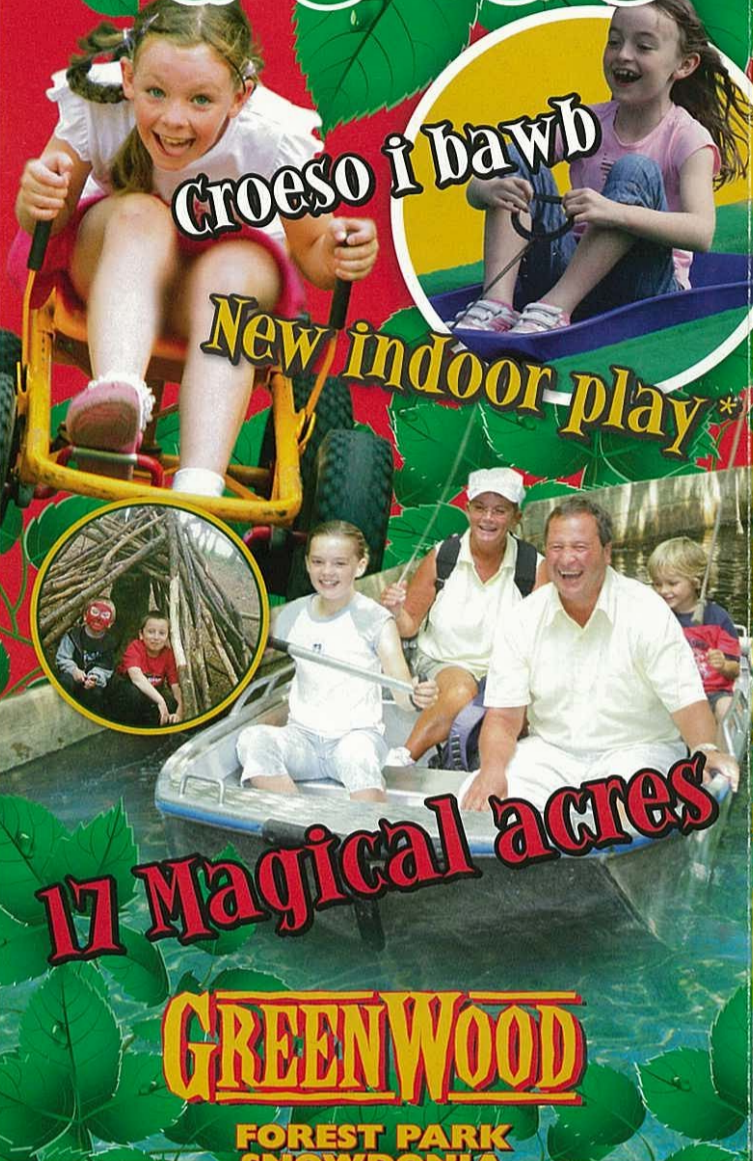


GreenWood Forest Park, Y Felinheli, Gwynedd.
T: 01248 671 493
E: info@greenwoodforestpark.co.uk
24 hrs info: 01248 670 076



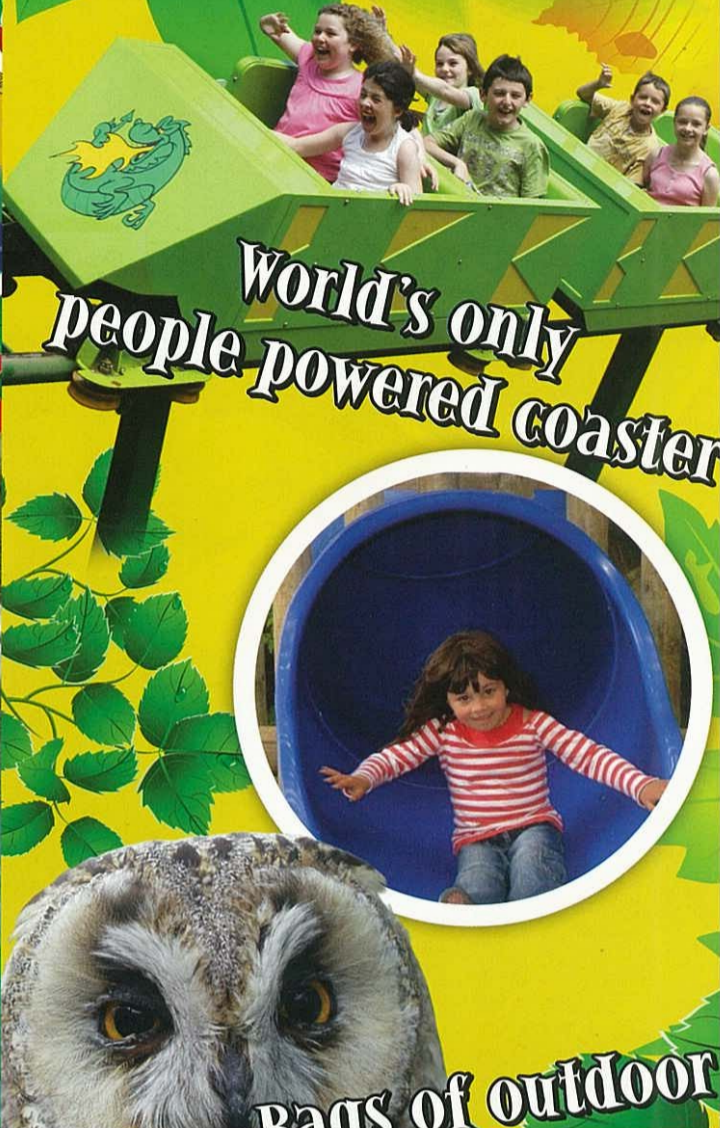
Winner - Best Family Attraction in North Wales

Family Adventure



Great Value Inclusive Prices

At GreenWood all the main attractions, activities and shows are included* - great value! Let the adventures begin...



Bags of undercover play

